

# FALL 2007-2008 GIRLS

Girls will  
be boys?  
Menswear  
influence is  
on tap.



MILINO INQUANTA

## Army of One Girl

Luxe elements such as sequins and sophisticated melton fabrics. Crests and appliqués in random positions look new as does the mixing of pink or orange with very green-based camouflage prints.



MISS BLUMARINE

## Feminine Flair

The newest addition is all-over prints that replicate foulard and scarf prints of yesteryear. Key items are lightweight sweaters and flowy voiles.



MONNA LISA

## Admiral Girl

A hybrid of confederate soldier/admiral looks, as well as some tried-and-true sailing gear. Stripes are key in knit tops, while bottoms are either denim or heavyweight wool. Jackets are detailed and streamlined.



NOLITA POCKET

## Victorian Queen

Ornate silos, rich fabrics, and "down to the details" royalty. For kids, silhouettes that are historically derived and interpreted with some casual twists likely will prevail. Feast your eyes on brocades, ruffles, velvets, and lace.



JOTTUM

# FALL 2007-2008

## BOYS

It's in  
the details—  
from zippers  
to bad-boy  
graphics.

**Cambridge**  
Dedicated to traditional college gear...striped sweaters, crests, corduroy pants, scarves, and striped shirts. Blazers in uncut corduroy.



PINCO PALLINO

**L'il Rebel**  
Direct from the young men's market, detailed jeans, leather jackets, and updated shirts with plenty of bad-boy graphics.

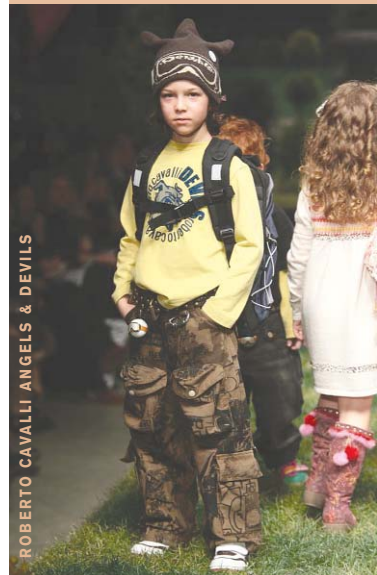


PINCO PALLINO



PINCO PALLINO

**Busy Bodies**  
Fleece is the fabric of choice; look for all-over prints to active pants. Snowboard styling details, padding, and zippers are great on fleece, as well as twills. Gray and navy are fresh.



ROBERTO CAVALLI ANGELS & DEVILS

**Storm Trooper**  
Clever styles with tie-dye effects, and bright orange as hue of the moment. Look for clean graphics and touches of shine, as well as patterned sweaters.



PINCO PALLINO

**Yodel**  
Pile traditional heavyweight fabrics, leather trims, and plush finishes. Silhouettes are ample and designed for practicality; stick to woody tones.